



MASTER LEDtube EM/ Mains T8

MAS LEDtube 1200mm HO 14W840 T8

The Philips MASTER LEDtube integrates a LED light source into a traditional fluorescent form factor. Its unique design creates a perfectly uniform visual appearance which cannot be distinguished from traditional fluorescent. For those that are looking for value for money within limited budget and re-lamping efforts for better light effect and lifetime.

Product data

General Information	
Cap-Base	G13 [Medium Bi-Pin Fluorescent]
Nominal Lifetime (Nom)	50000 h
Switching Cycle	200000X
B50L70	50000 h

Light Technical	
Color Code	840 [CCT of 4000K]
Luminous Flux (Nom)	2100 lm
Luminous Flux (Rated) (Nom)	2100 lm
Correlated Color Temperature (Nom)	4000 K
Color Consistency	<6
Color Rendering Index (Nom)	83
LLMF At End Of Nominal Lifetime (Nom)	70 %

Operating and Electrical	
Input Frequency	50 to 60 Hz
Power (Rated) (Nom)	14 W
Lamp Current (Max)	65 mA
Lamp Current (Min)	60 mA

Starting Time (Nom)	0.5 s
Warm Up Time to 60% Light (Nom)	0.5 s
Power Factor (Nom)	0.9
Voltage (Nom)	220-240 V

Temperature	
T-Ambient (Max)	45 °C
T-Ambient (Min)	-20 °C
T-Storage (Max)	65 °C
T-Storage (Min)	-40 °C
T-Case Maximum (Nom)	55 °C

Controls and Dimming	
Dimmable	No

Mechanical and Housing	
Product Length	1200 mm

Approval and Application	
Energy Saving Product	Yes

MASTER LEDtube EM/Mains T8

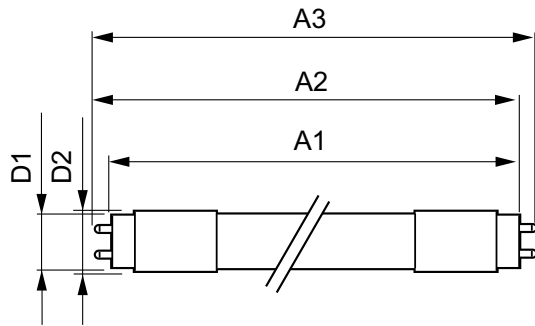
Energy Efficiency Label (EEL)	A++
Approval Marks	CE marking RoHS compliance KEMA Keur certificate
Energy Consumption kWh/1000 h	14 kWh
Product Data	
Full product code	871869668720800
Order product name	MAS LEDtube 1200mm HO 14W840 T8
EAN/UPC - Product	8718696687208

Order code	929001299002
Numerator - Quantity Per Pack	1
Numerator - Packs per outer box	10
Material Nr. (12NC)	929001299002
Net Weight (Piece)	0.270 kg

Warnings and Safety

- NOTES: The overall energy efficiency and light distribution of any installation that uses these lamps are determined by the design of the installation.

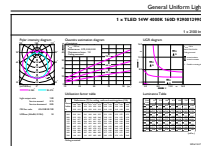
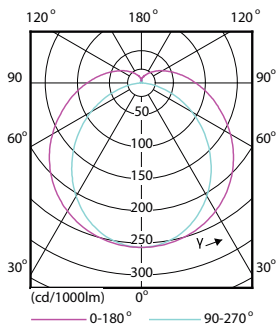
Dimensional drawing



TLED 4ft 14W-36W 2100lm 160D 4000K G13ND

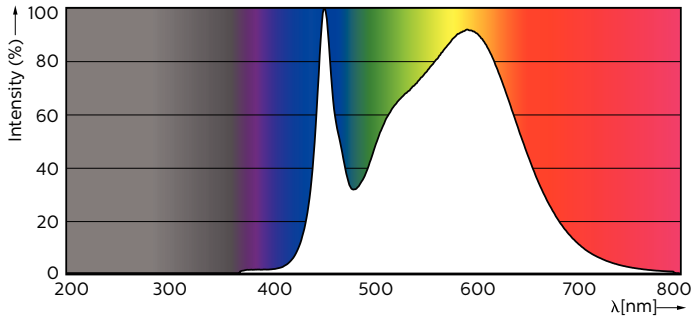
Product	D1	D2	A1	A2	A3
MAS LEDtube 1200mm HO 14W840 T8	25.78 mm	28 mm	1198.2 mm	1205.3 mm	1212.4 mm

Photometric data



MASTER LEDtube EM/Mains T8

Photometric data



Lifetime

