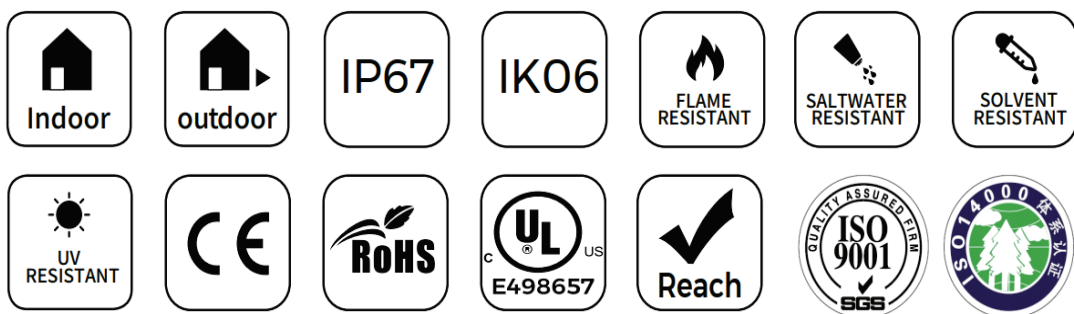


Specification

Planar Neon Series NMS0410



▼ Features

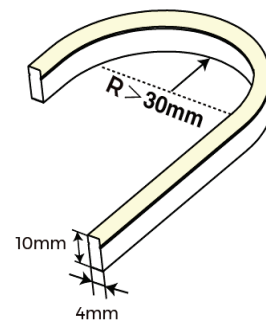


- ※ Light source: High luminous efficiency, LM80 test proved.
- ※ Process & Material: High light transmittance, environmental silicone material, integrated extrusion molding technology, IP67.
- ※ Optical Design: Unique optical light distribution structure design, uniform lighting surface and no shadow.
- ※ Appearance Design: Compared with the traditional neon tube or PVC guardrail tube, the silicone material has good flexibility, the simple and stylish appearance, which is exquisite and unique.
- ※ Product Certification: UL、CE、ROHS.
- ※ Environmental Features: Resistance to saline solutions, acids & alkali, corrosive gases and UV.
- ※ Working/Storage Temperature: Ta: -30~55°C / 0°C ~ 60°C.
- ※ 3 years warranty, life span over 36000 hours.

▼ Application

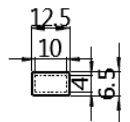
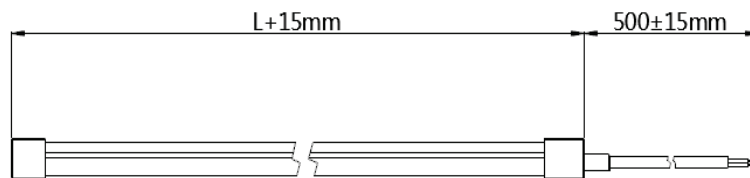
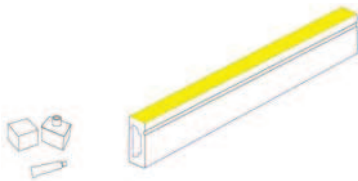
- ※ Signage lighting
- ※ Outdoor/indoor lighting

▼ Bending application



▼ IP Process& Structure Parameters

silicone end cap



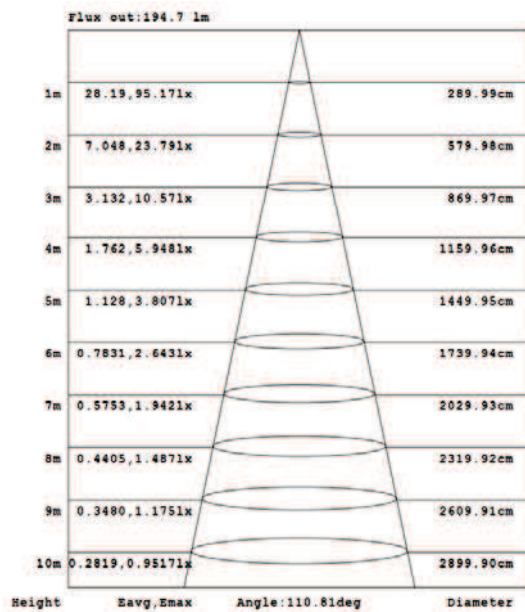
▼ Basic Parameters

Model	CCT/colors	CRI	Input voltage (V)	Rated current (A)	Rated power (w)	Lumens (LM)	Size (mm)	Max.length	Cutting unit (mm)
NMS0410-9XXXXCSN050CC0500	2300K	>90	12V/24V	0.6A/0.3A	7.2	240	W4*H10	5000mm	17.86 (12V) 41.66 (24V)
	2700K					240			
	3000K					240			
	4000K					270			
NMS0410-0XXXXCSN050CC0500	R 620-630nm	/	12V/24V	0.6A/0.3A	7.2	/	W4*H10	5000mm	17.86 (12V) 41.66 (24V)
	G 525-530nm								
	B 465-470nm								
	Y 587-592nm								
NMS0410-9LWNWXXCSN050CC0500	2300K~4000K	>90				170			15.625 (12V) 31.25 (24V)

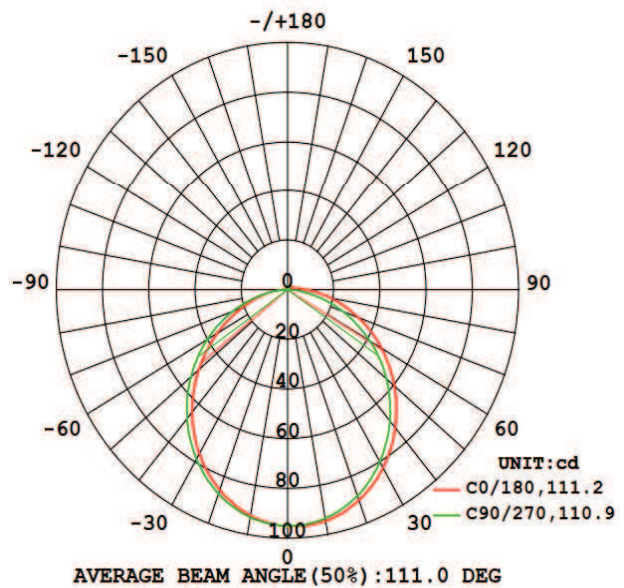
Note :

- 1、The above data is the testing result of 1M standard product;
- 2、The power and lumens of output data can be vary up to $\pm 10\%$;
- 3、The above parameters are all typical values.

▼ Light Distribution



Effective average illuminance



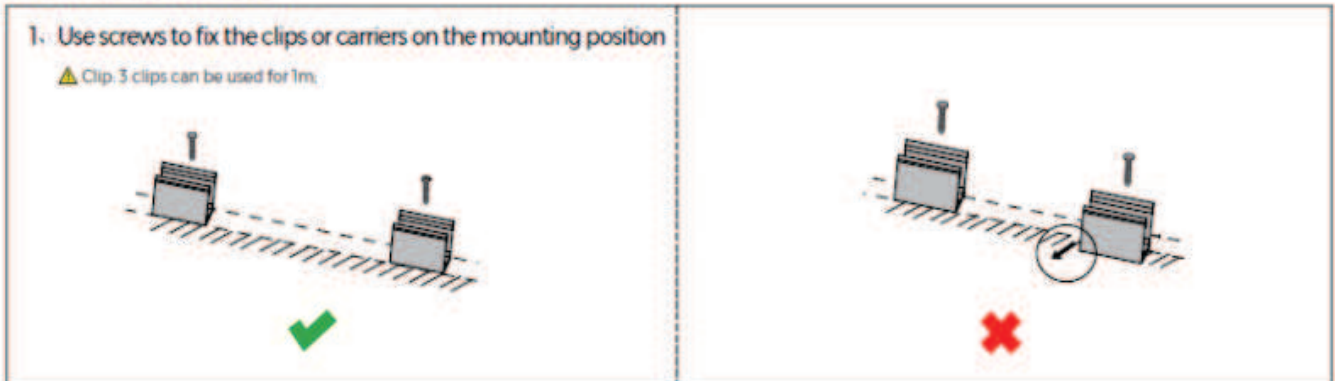
Light distribution

Note: The above data is the testing result of CCT 4000K, if there is need for the IES files of other colors, please download the specific file through the IES data bank.

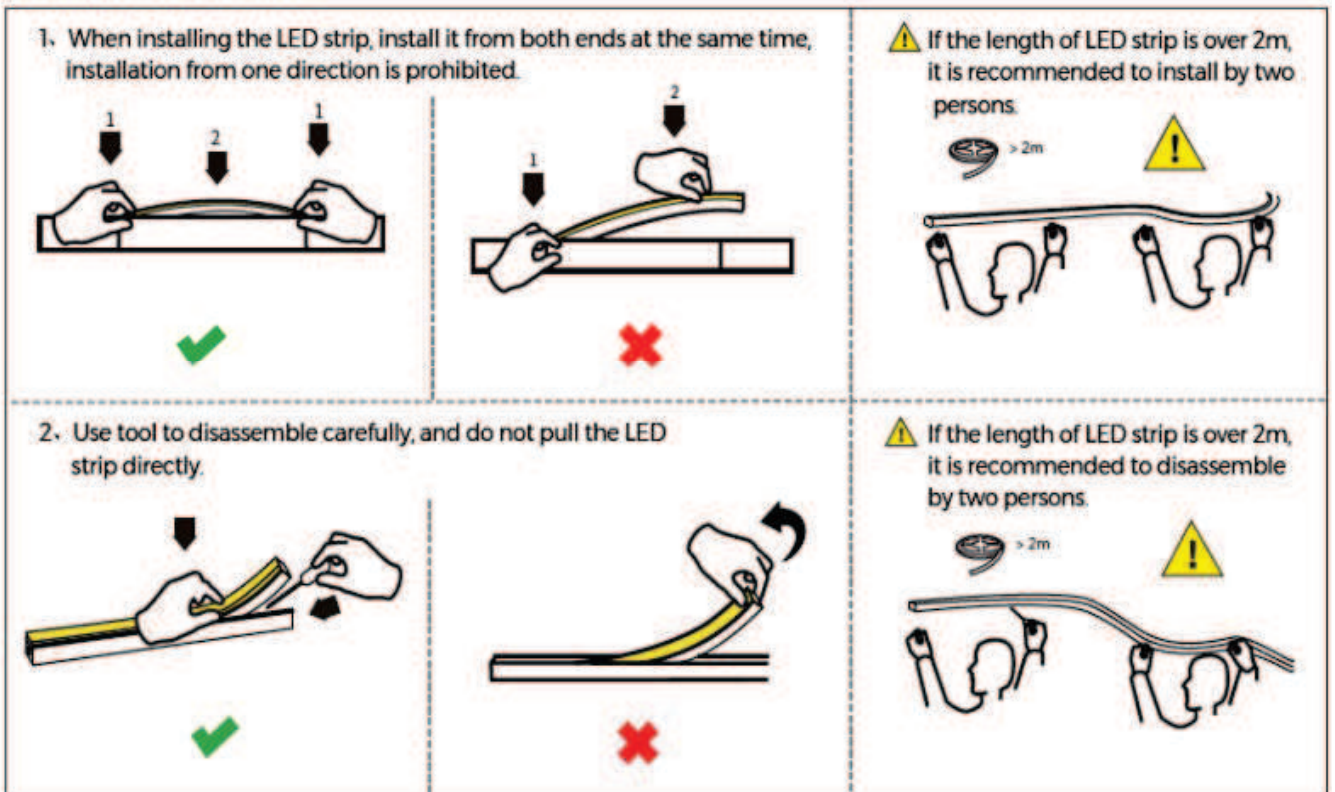


▼ Installation Guidance

Installation of clip



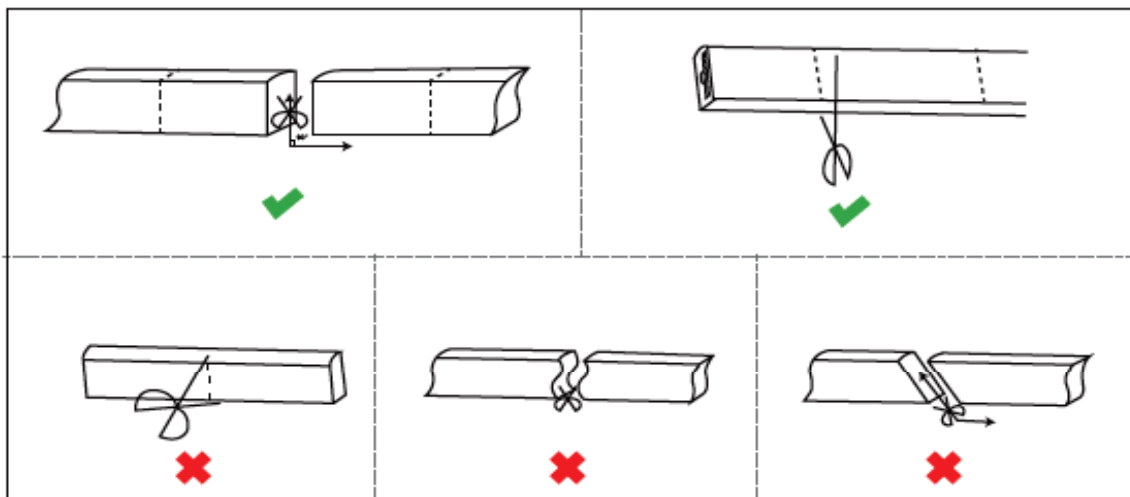
Installation of carrier



▼ Precautions

- Use a 24V DC isolated power supply to drive the neon lamp strip and the ripple wave of constant voltage source shall be less than 5%. It is not allowed to use RC voltage reduction or non-isolated power supply to drive the neon lamp strip.
- In actual applications, 20% of the power supply shall be kept (only 80% of the power is used) to guarantee that sufficient voltage is available to drive the product.
- Attention shall be paid to safe operation. After powering on, it is not allowed to touch the AC power supply to avoid an electric shock.
- Attention shall be paid to the positive and negative poles of the wires during installation and whether the power supply conforms to required voltages to avoid damages.
- Avoid scratching, distortion and irregular bending of the product during installation; otherwise it may cause irreparable damage to the product.
- Please do not bend the strip into an arc with a diameter less than 30mm to ensure the longevity and reliability, the bending diameter too small will damage the product itself.
- If the actual length of application exceeds the specified using length, it will lead to overload heating and uneven brightness.
- To keep the eyes from being harmed, try to avoid staring at the glowing side of the LED strip for a long time.
- Non-professionals are prohibited from installing, disassembling and repairing the product.
- Do not use any acid or alkaline adhesive to fix products (including not limited to glass cement, etc.)
- Products with different IP grade should be used in different environments, the product with IP67 is not suitable for use in water-immersed environment.
- The final color of products with different sizes and specifications is slightly deviated due to structural differences under the same color temperature, which should be confirmed before use.

Cutting method



It is forbidden to wrap objects less than 30mm

